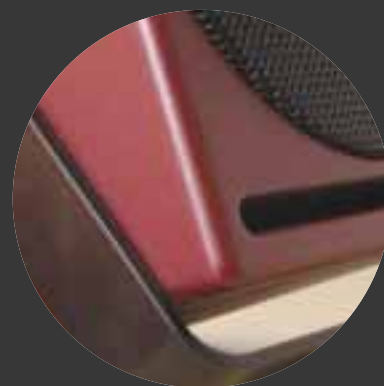
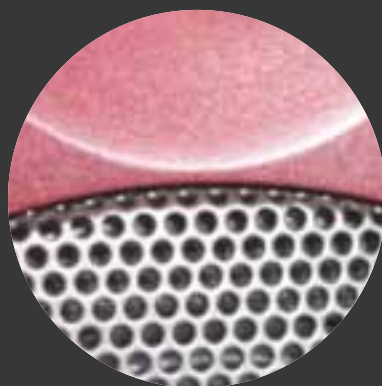




A 14-2

professional studio monitor



Made in Switzerland

The A14-2 full range speaker is the smallest member of the PSI Audio A-Series professional studio monitor range.

Housed in an extremely compact cabinet the A14-2 is designed to implement highest possible SPL and broad bandwidth. The A14-2 is ideal for studio applications where the ultimate in precision and portability is required. Packed into its compact dimensions, is all the technology of its larger brothers. The powerful bi-amplified output features the unique "AOI" output stages, while the active crossover, with integrated "CPR", delivers unprecedented impulse behaviour – with excellent stereo imaging. The crossover is also optimised for maximum phase coherence, projecting a wide horizontal and vertical ideal

Excellence through technology

listening area. Designed to work in harmony with the full range of A series monitors the A14-2 also makes ideal rear speakers in a surround sound setup, or can be developed in to a more powerful system by adding the A225-1 sub – thus protecting your investment.

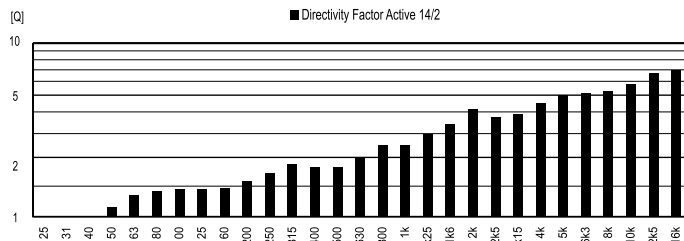
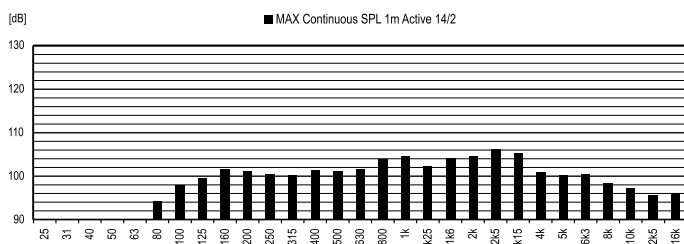
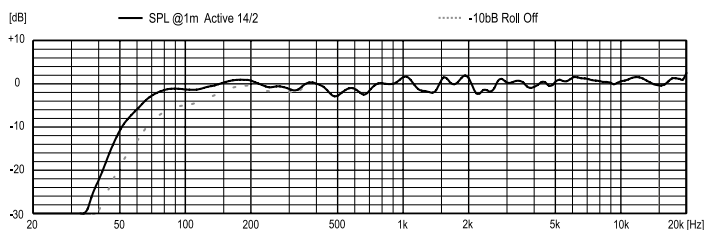
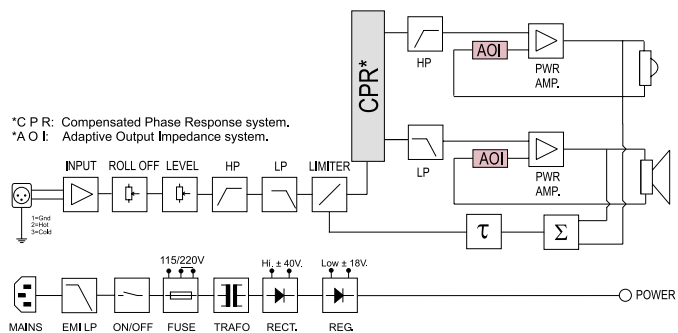
Key Features

- ▶ CPR system for precise stereo image
- ▶ AOI system for superior impulse accuracy
- ▶ ALG system for ideal acoustic impedance adaptation
- ▶ Outstanding SPL @1m 118 dB (peak/pair)
- ▶ Broad bandwidth 58 – 22000Hz
- ▶ Flat frequency response +/- 2.5 dB
- ▶ Optimised phase coherent directivity
- ▶ Metal handle for easy handling, (mic.stand + wall mounting)
- ▶ Volume control on the front panel
- ▶ Magnetically compensated for use close to monitors
- ▶ Bi-amplified output stage
- ▶ Protection circuit for each driver



Technical Data

Power RMS	60+40W
Program power	100W
Input Impedance	Sym,10kOhms
Sensitivity for 100 dB @1m	0.775V
Signal to Noise Ratio	-96 dB
Input Overload	12 Vpp
Continuous Max SPL,1m	101 dB (single)
Program Peak SPL,1m	118 dB (pair)
Response at - 6 dB	58 - 22000Hz
Tolerances	±2.5 dB (68Hz - 18kHz)
Distortion THD	<1.8% (75Hz - 15kHz)
Dispersion (P.N.4 - 16kHz) at - 6 dB	100° x 100° (H x V)
System	2 Way(s)
Cross over frequency	3.5kHz
Woofers dim.Ext./ Diaphragm	Ø144mm / Ø102mm
Tweeter's dim. Ext./ Diaphragm	Ø70mm / Ø20mm
Connectors	1x XLR F / 3P
Signal input	1=GND, 2=(+), 3=(-)
Box Material	MDF
Dimensions cabinet W x H x Dmm	162 x 242 x 170
Net Weight	5Kg
Voltage	115/230V (50-60Hz)
Power Consumption	7-70VA
Mean/Max Humidity	<75%/<90%
External Temperature	5-40°C



Head Office

Relec SA
Z.I. Petits-Champs 11 a+b CH-1400 YVERDON Switzerland

T +41 (0) 24 426 04 20 F +41 (0) 24 426 04 51
E info@psiaudio.com W www.psaudio.com

All rights reserved. All data subject to change without prior notice.



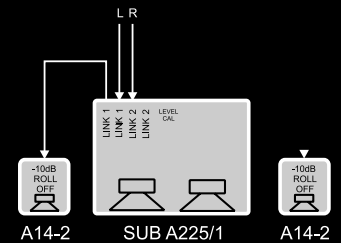
Satellite 14-225

The Satellite 14-225 system, consisting of a pair of A14-2 speakers and a single A225-1 sub, represents true 3-way stereo reproduction. The crossover frequencies between the units are perfectly aligned and form a flat frequency response from 28Hz up to 22KHz. The big advantage of the A14-225 system is that it delivers the dynamic performance and quality of sound of much larger systems, taking up minimum space.

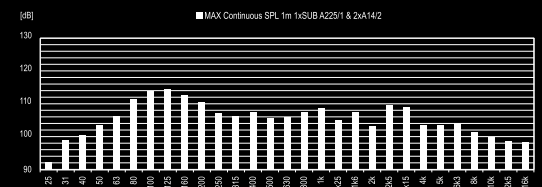
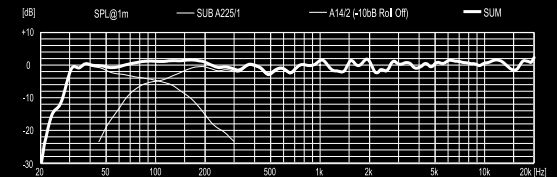
Technical Data

Response at -6 dB	28Hz - 22000Hz
Continuous Max SPL,@1m	108 dB
Program Peak SPL,@1m	120 dB
Tolerances	±2.5 dB (30Hz -18kHz)

System Setup



System Response



www.psaudio.com